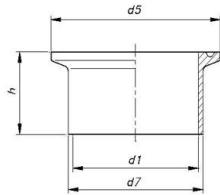


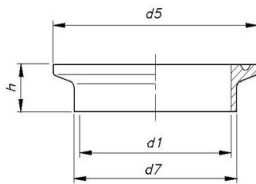


>> UNIONS CLAMP OD



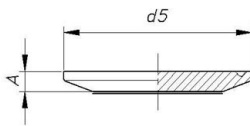
WELDING CLAMP

FIG.1712



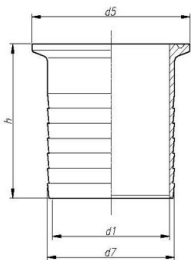
SHORT WELDING CLAMP

FIG.1722



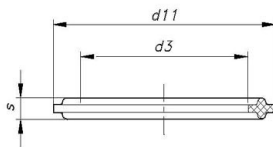
BLIND LINER CLAMP

FIG.1732



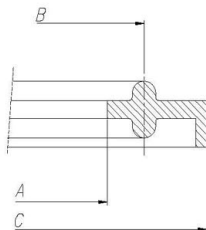
HOSE LINER CLAMP

FIG.1772



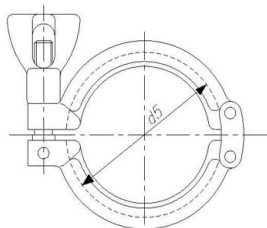
GASKET

FIG.1708



UNION CLAMP SEAL WITH LIP

FIG.1708L



CLAMP HEAVY

FIG.1703



>> UNIONS CLAMP OD

WELDING CLAMP (INCHES)

DN	d1	d7	d5	h	AISI 304L	AISI 316L
1"	22,1	25,4	50,5	28,6	1712100	21712100
1½"	34,8	38,1	50,5	28,6	1712112	21712112
2"	47,5	50,8	64	28,6	1712200	21712200
2½"	60,2	63,5	77,5	28,6	1712212	21712212
3"	72,9	76,2	91	28,6	1712300	21712300
4"	97,4	101,6	119	28,6	1712400	21712400

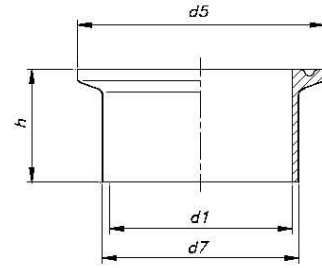


Fig.1712

SHORT WELDING CLAMP

DN	d1	d7	d5	h	AISI 304L	AISI 316L
½"	9,5	12,7	25,4	12,7	1722012	21722012
¾"	15,8	19	25,4	12,7	1722034	21722034
1"	22,1	25,4	50,5	12,7	1722100	21722100
1½"	34,8	38,1	50,5	12,7	1722112	21722112
2"	47,5	50,8	64	12,7	1722200	21722200
2½"	60,2	63,5	77,5	12,7	1722212	21722212
3"	72,9	76,2	91	12,7	1722300	21722300
4"	97,4	101,6	119	15,8	1722400	21722400

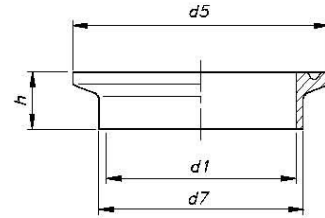


Fig.1722

BLIND LINER CLAMP

DN	d5	A	AISI 316L
½"	25,4	5	21732012
¾"	25,4	5	21732012
1"	50,5	6,5	21732100
1½"	50,5	6,5	21732100
2"	64	6,5	21732200
2½"	77,5	6,5	21732212
3"	91	6,5	21732300
4"	119	8	21732400

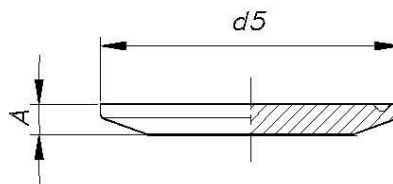


Fig.1732



>> UNIONS CLAMP OD

HOSE LINER CLAMP

DN	d1	d7	d5	h	AISI 316L
1"	22,1	26,2	50,5	42,9	21772100
1½"	34,8	39	50,5	42,9	21772112
2"	47,5	51,6	64	58,7	21772200
2½"	60,2	64,3	77,5	59,5	21772212
3"	72,9	77	91	78,6	21772300
4"	97,4	102,5	119	86,5	21772400

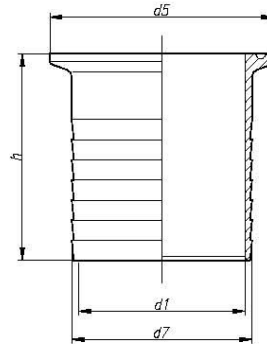


Fig.1772

- To consult availability.

GASKET

DN	d3	d11	S	PTFE
1"	22,8	50,5	5,5	1710100
1½"	35,8	50,5	5,5	1710112
2"	48,8	64	5,5	1710200
2½"	60,5	77,5	5,5	1710212
3"	73,1	91	5,5	1710300
4"	97,8	119	5,5	1710400

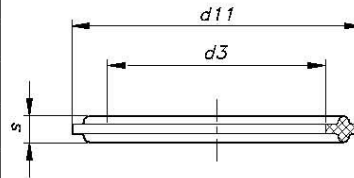


Fig.1708

UNION CLAMP SEAL WITH LIP

DN	A	B	C	MVQ	FPM	NBR	EPDM
1"	22,8	43,5	50,5	1704100	1706100	1707100	1708100
1½"	35,8	43,5	50,5	1704112	1706112	1707112	1708112
2"	48,8	56,5	64	1704200	1706200	1707200	1708200
2½"	60,5	70,5	77,5	1704212	1706212	1707212	1708212
3"	73,1	83,5	91	1704300	1706300	1707300	1708300
4"	97,8	110	119	1704400	1706400	1707400	1708400

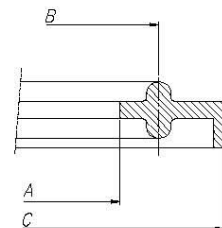


Fig.1708L



>> UNIONS CLAMP OD

CLAMP HEAVY

DN	d5	AISI 304L
½"	28	1703012
¾"	28	1703012
1"	53,6	1703100
1½"	53,6	1703100
2"	67	1703200
2½"	80,6	1703212
3"	94	1703300
4"	122	1703400

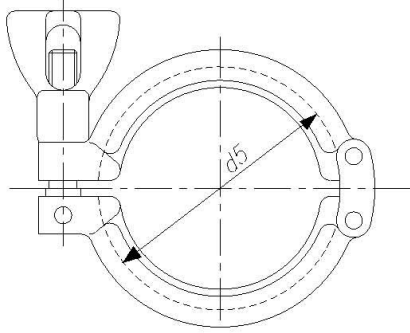


Fig.1703